

Figures

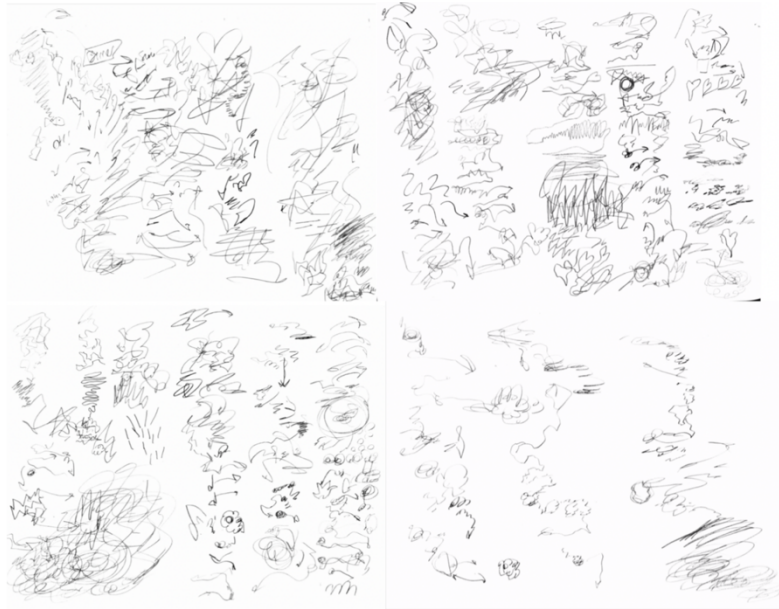


Figure X.2



Figure X.3



Figure X.4

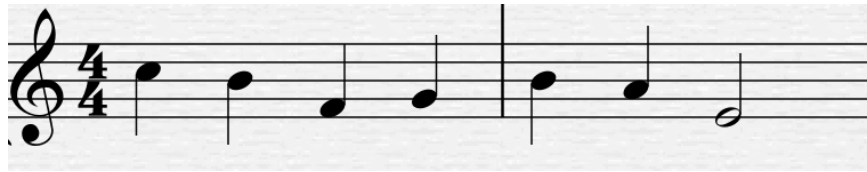


Figure 1.1

Off-Kilter $\text{♩} = 130$

Contrabassoon

6

Cbsn.

11

Cbsn.

Figure 1.2

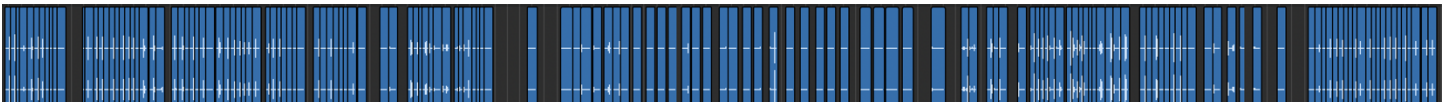


Figure 2.1

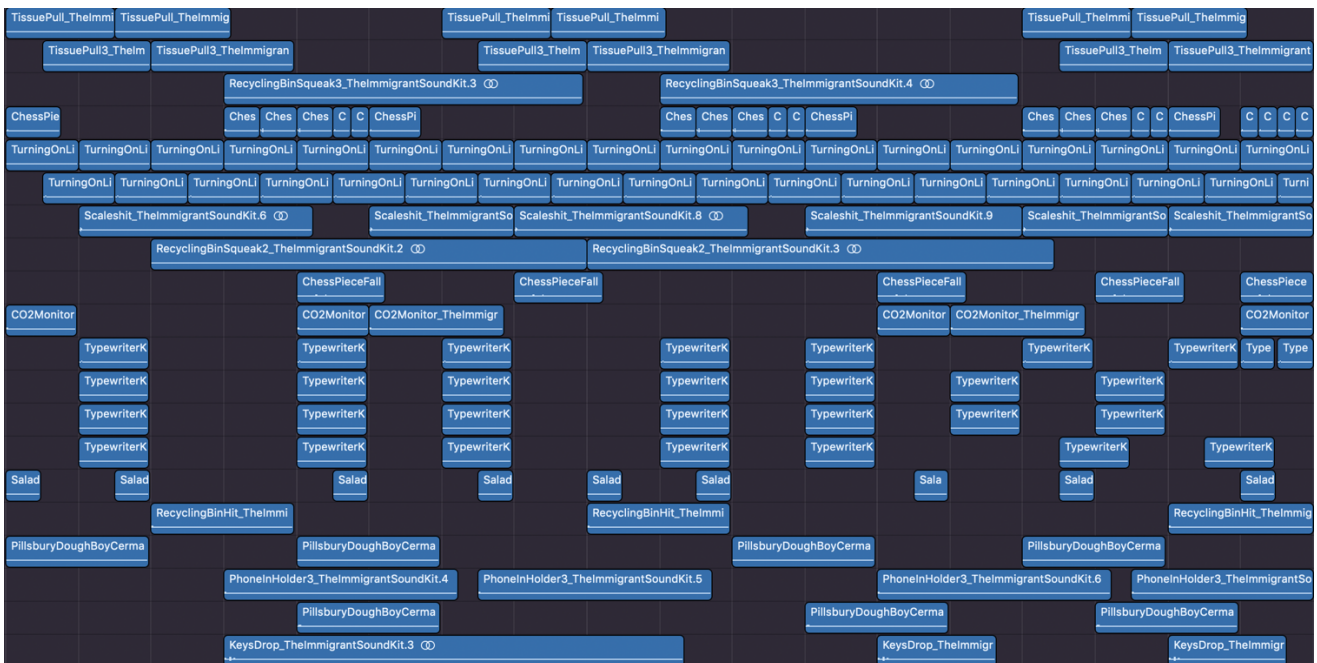


Figure 2.2

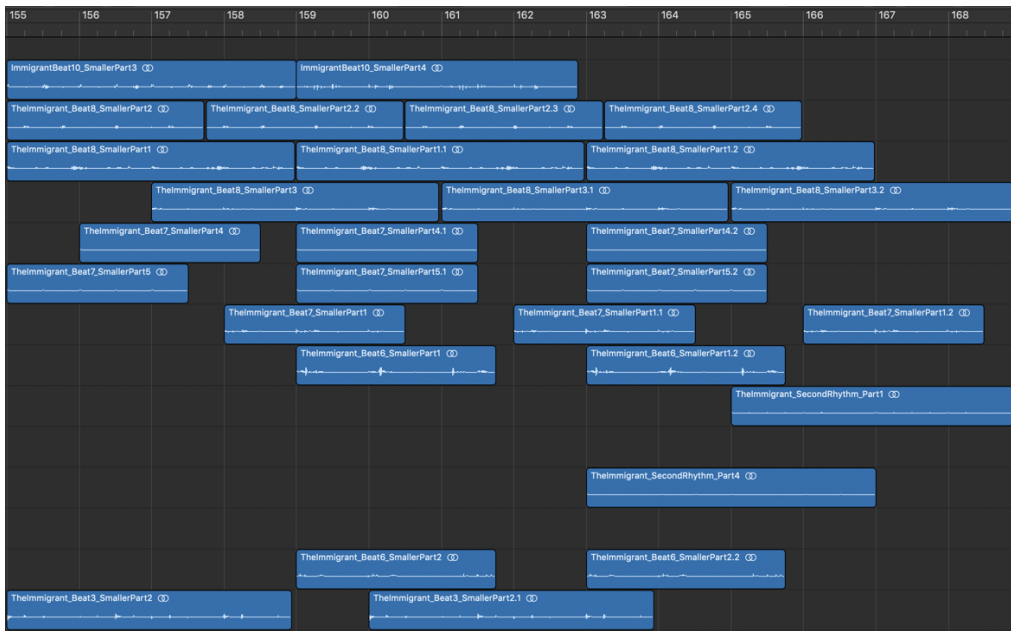


Figure 2.3

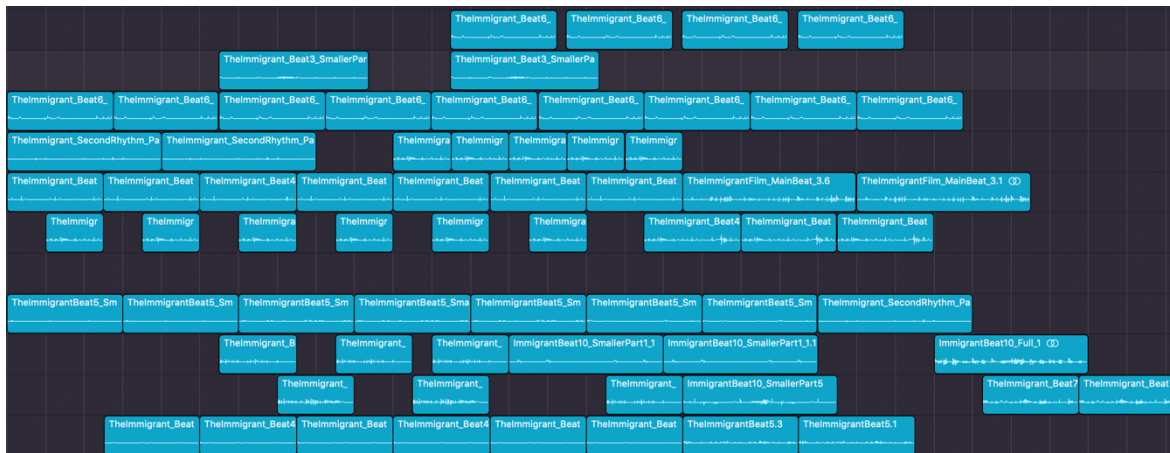


Figure 2.4



Figure 2.5

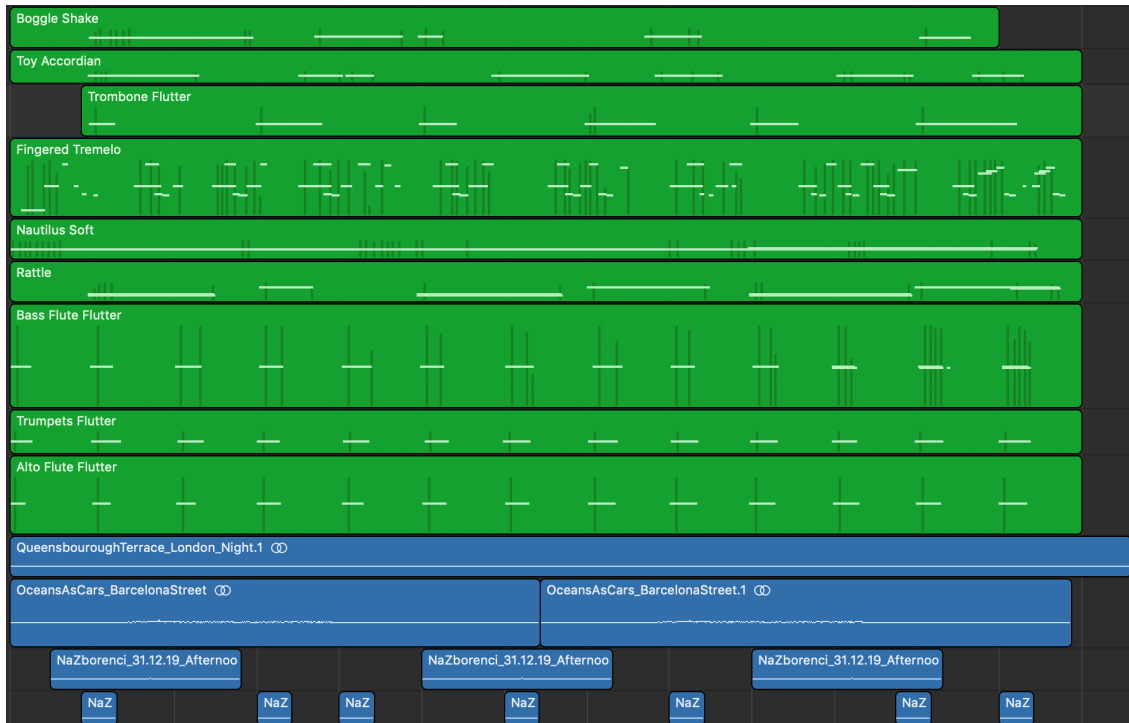


Figure 3.1

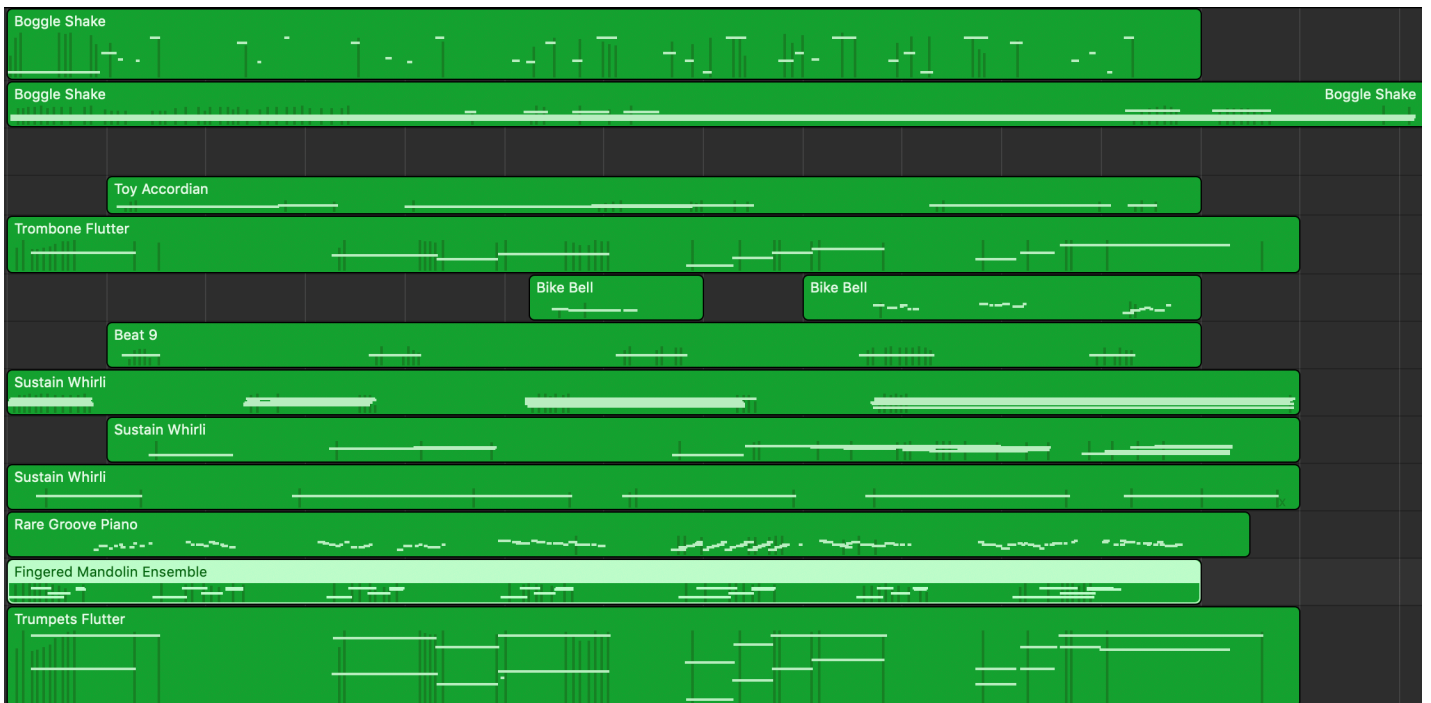


Figure 3.2

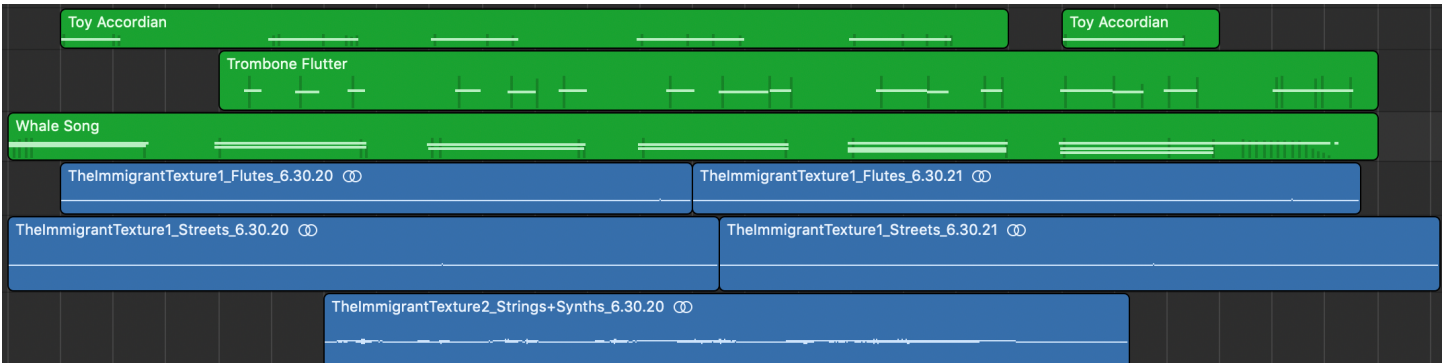


Figure 3.3

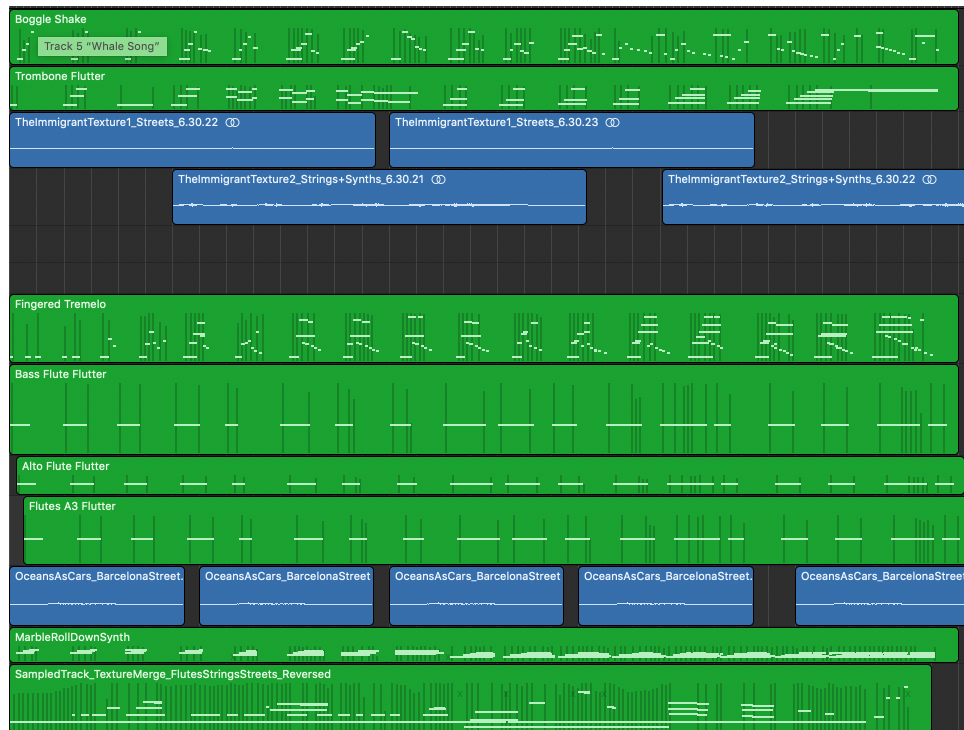


Figure 3.4

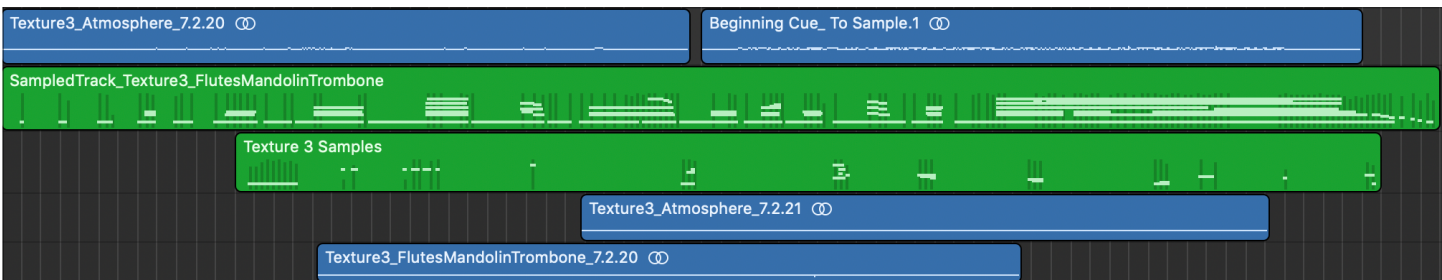


Figure 3.5

Charlie Chaplin's "The Immigrant"

The Dream Theme

Dream-like ♩=170 Nicholas Escobar

The musical score for 'The Dream Theme' consists of three staves. The first staff is for Violin, starting with a *port.* marking and a dynamic range from *mf* to *f*. The second staff is for Violin II (Vln.), starting at measure 9 with a *mp* dynamic. The third staff is also for Violin II, starting at measure 17, featuring triplet markings and ending with a *f* dynamic. The tempo is marked as 'Dream-like ♩=170'.

Figure A.1

Charlie Chaplin's "The Immigrant"

The Love Theme

With Emotion ♩=130 Nicholas Escobar

The musical score for 'The Love Theme' is a single staff in 4/4 time, marked 'With Emotion ♩=130'. It begins with a *mp* dynamic and includes several triplet markings. The score is divided into four systems, with measure numbers 8, 16, and 20 indicated at the start of the second, third, and fourth systems respectively. The dynamics vary throughout, including *mf* and *f*.

Figure A.2

Charlie Chaplin's "The Immigrant"

Musical Phrases

Suggested Tempo (may vary) ♩=130

Music by Nicholas Escobar

"Dream Theme"

record perhaps 3 diff. takes, varying speed and expression

record both this and one octave above

Violin

Violin musical notation in 4/4 time, marked *mp*. The melody consists of a series of eighth and quarter notes, ending with a repeat sign.

Love Theme

record a few takes with varying expression, slurring, dynamics

Vln.

Vln. musical notation in 3/4 time, marked *p* and *mp*. It features a triplet of eighth notes and a final quarter note.

Charlie's Theme

Edna's Theme

Vln.

Vln. musical notation in 4/4 time, marked *f*, *sfp*, and *p*. It includes a triplet of eighth notes and a glissando marking.

Figure A.3